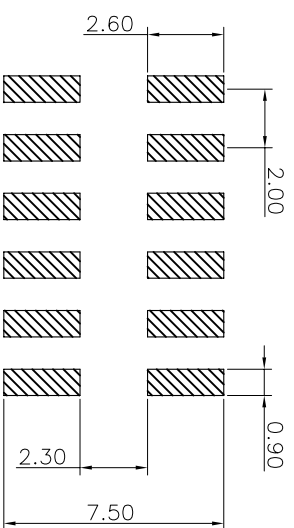
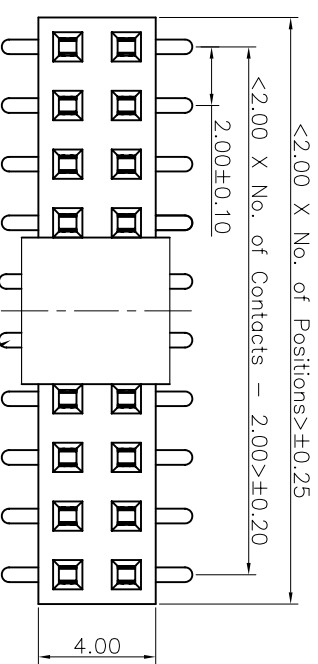
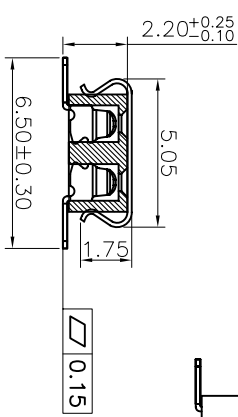
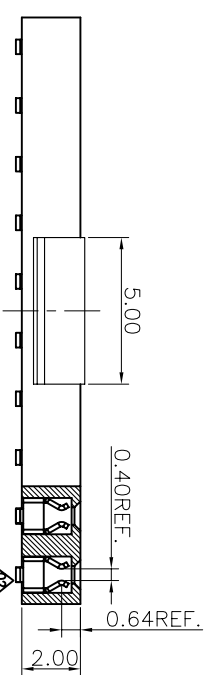
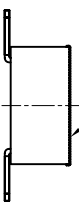


REV.	LOCAS.	DESCRIPTION	DATE	DRAWN
02	△	Add the cap specifications	2006.08.09	丁敏
03	△	change the specifications of plastic	2006.08.22	丁敏
04	△	Add the bottom entry layout	2007.08.02	向曉波
05	△	變更新料號	2009.03.05	王群祥
06	△	新增醃酸膠紙規格	2010.05.24	謝金發

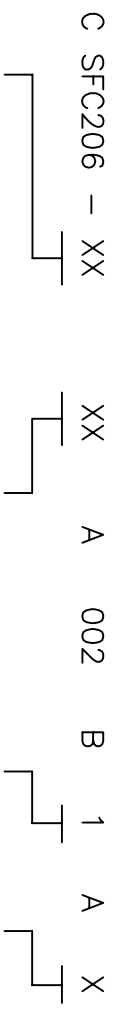
RECOMMENDED P.C.B LAYOUT
FOR TOP ENTRY
(Tolerance:±0.05)



△ acetate tape



△ Ordering Information



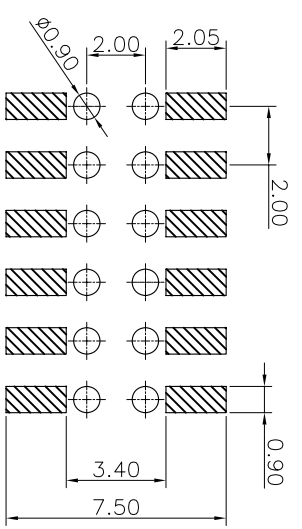
No. of Pins per Row
02~40

Standard Plating
02=Gold Flash
Selective Plating
01=Tin
05=Gold Flash/Tin

Color
1=Black

Standard Packing
E=(Manufacture+CAP)Tube
Selective Packing
F=(Manufacture+CAP)Tube&Reel

RECOMMENDED P.C.B LAYOUT
FOR BOTTOM ENTRY
(Tolerance:±0.05)



格菱股份有限公司
Greenconn Corporation

REV.	UNIT.	SCALE.	PAGE.	DESIGN.	CHECKED:	AUDITED:	APPROVED:
06	mm	4:1	1/1	謝金發	劉北平	李輝	cc_li

GENERAL TOLERANCE	DESIGN:	DWG. NO.	TITLE.
X:±5.0°	DATE: 2010.05.24	CSFC206-A002B1AX	2.00 FEMALE HEADER
X:±3.0°	DATE: 2010.05.24		DUAL ROWS SMT TYPE
.XX±2.0°	DATE: 2010.05.24		BASE 2.00H
.XXX±1.0°	DATE: 2010.05.24		

DESIGN:	CHECKED:	AUDITED:	APPROVED:	PART NO.	TITLE.
謝金發	劉北平	李輝	cc_li	CSFC206-XXXXXA002B1AX	2.00 FEMALE HEADER
					DUAL ROWS SMT TYPE
					BASE 2.00H